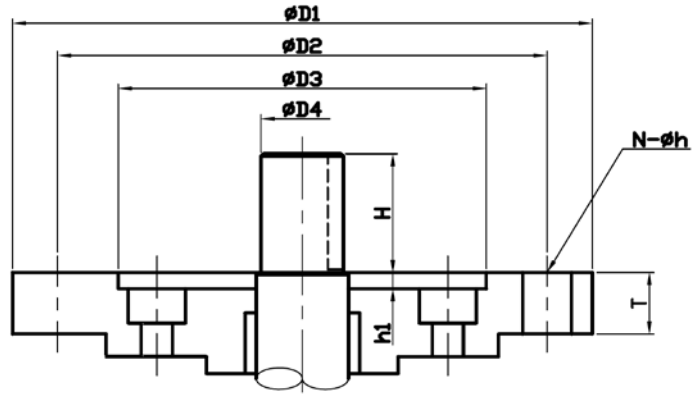


ISO5211 MOUNTING PAD DETAILS



ISO 5211 Mounting		ØD1	ØD2	ØD3	N- Øh	h1	T	ØD4	Approx. H	
PAD NO.	Max. Bolt Torque									
F4	63	56	42	30	4-5.5	3	11	10	7	
									7.4	
									9.5	
F5	125	65	50	35	4-6.5	3.5	12	15	10.5	
							14	20	15	
							7	15	16	
							8	19.8	10.5	
F07	250	90	70	55	4-9	3.5	12	20	18	
									22	
F10	500	125	102	70	4-11	3.5	15	30	28	
									30	
F12	1000	150	125	85	4-14	3.5	18		40	
							25	40	38	
									50	
F14	2,000	175	140	100	4-18	4.0	21	28	20	
							30	45	45	
						4.5	20	50	45	
							30		39	
									65	
F16	4,000	210	165	130	4-22	5.5	30	45	45	
									40	60
									55	75
							35			
F25	8,000	300	254	200	8-18	5.5	30.5	50	85	
								60	75	
							35	70	100	
								50	85	
								65	100	
								60	85	
								65	100	
	65	115								
F30	16,000	350	298	230	8-22	5.5	40	75	100	
							35	85	106.5	
								90	115	
									110	
							45.5	75	120	
F35	32,000	415	356	260	8-33	5.5	35	100	114.5	
								95	115	
							35	100	100	
								105	133	
							50.5	90	120	
F40	63,000	475	406	300	8-39	8.5	50	120	165	